



CHURCH OF ST. LEO THE GREAT

4940 BROADVIEW RD. CLEVELAND, OH 44109 | 216.661.1006 | LEOTHEGREAT.ORG

SUNDAY, DECEMBER 10, 2023

2ND SUNDAY OF ADVENT



"Prepare the way of the Lord." - Mk 1:3

Fr. James P. Schmitz, Pastor
jschmitz@leothegreat.org

Patrick Berigan, Deacon
pberigan@leothegreat.org

Joan Berigan
jberigan@leothegreat.org

Denise Burns, Principal
dburns@leothegreat.org

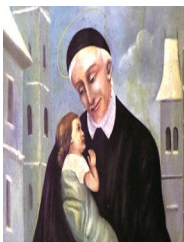


ADVENT WITH MARY: THE JOYFUL MYSTERIES

Continuing Monday, December 11th at 10:00a.m. we will be reflecting on the Joyful Mysteries of the Rosary. Join us for each of the Mondays during Advent (December 4th, 11th, and 18th) in the Chapel as we pray, meditate and share. Please bring your Rosaries.

SAINT VINCENT DE PAUL

To “live and let live” is all right in its own way – but, to “live and Help live” is much better. You can help others live by sharing your goods and your prayers with those in need through your St. Vincent de Paul Outreach Organization. Next weekend, DECEMBER 16TH AND 17TH, is our monthly food collection. Our cupboard is in need of the following items: Canned Corn, Canned Pasta Sauce, Scalloped Potatoes, Instant Mashed Potatoes, Canned Baked Beans, Canned Pasta, Pancake Syrup, Canned Diced Tomatoes, assorted Soups, Ramen Noodles, Tuna Fish, Rice & Noodle Sides, Peanut Butter & Jelly, Cereal, Canned Fruit, White Rice, Dishwashing Soap & Bar Soap, Cranberry Sauce, Canned Yams and Stuffing Mix. Let others know that you care by helping your organization bring light and hope during this Christmas Season. We thank you for your continued support!



CHRISTMAS CAROLING December 16, 2023 @ 5:00pm



Sing your heart out for the coming of our Savior, Jesus Christ! Join us as we go caroling up and down nearby Old Brooklyn side streets, filling the quiet winter air with our songs of JOY. We will meet in the Parish Center following the 4:00pm vigil Mass. Soups will be shared—as well as cookies, coffee, cocoa and other refreshments. To sign up please call **Pat Dolezal** at 330-933-4992. You can also visit us online to sign up as well as in the back of the church after weekend Masses, or over at the Rectory Office.



Mark your calendars to
join us for Mass, events &
activities throughout the year!

Are you a former student of St. Leo School?
Is your child a former student of St. Leo School?
Please, let us know by completing a form on the parish website leothegreat.org. Under “Organizations” tab select *Alumni Association*. We hope to hear from you!

Photos taken back in August, September, or October can be picked up in the rectory during the week or in the main vestibule of the church after the weekend Masses.

Remembrance Trees -- Ornaments will be available before and after the 4:00 p.m. Mass on Saturday, December 23rd, and the 8:00 and 11:00 a.m. Masses on Sunday, December 24th.

Christmas Mass -- Sunday, December 24th, at 4:00 p.m. and Monday, December 25th, at 8:00 a.m. and 11:00 a.m.

MEMORIES

At one time, freshly cut Christmas trees were permitted in the church. The sanctuary would be filled with trees in a range of sizes, some well over 10 feet tall. Just as with freshly cut trees in your home, it took some maneuvering to get them into the tree stands and adjust them so that they would be straight. One Christmas Eve, between the Vigil Mass and the Midnight Mass, a couple of the trees toppled. The priests in residence made a valiant effort to get the trees back in place. It wasn't until it was time to take the trees down that it was noted that the priests used spools of ribbon leftover from wrapping presents to hold those towering trees in place.

Share *YOUR* memories with us! Submit them to nzola@leothegreat.org or write it down on a piece of paper and turn it in to the Rectory Office.

We also welcome PHOTOS throughout the year of the people and events taking place. Please, send *YOURS* to photos@leothegreat.org.



ST. LEO THE GREAT
PARISH & SCHOOL

2024 THE GREAT SWEEPSTAKES 2024

Please Print

Name _____

Address _____

Phone _____ Email _____

Please return this stub with your payment of \$30.00. Checks are to be made out to St. Leo the Great.

Questions? Please call the Rectory Office at 216-661-1006 or visit our website at www.leothegreat.org

ST. LEO THE GREAT - CLEVELAND, OHIO

Ornaments in remembrance of loved ones will be available before and after the **4:00 P.M. MASS ON SATURDAY, DECEMBER 23RD, AND THE 8:00 & 11:00 A.M. MASSES SUNDAY, DECEMBER 24TH.** Names of loved ones can be written on the ornaments and hung on the trees in the sanctuary for the Christmas season. *If a loved one from this parish passed away earlier this year, their name has already been placed on an ornament and will be added to the tree.* The ornaments can be taken home in January at the conclusion of the Christmas season -- January 6th and 7th. Ornaments not taken from the trees at that time will be placed in the main vestibule and may be picked up until January 21st.



PLEASE REMEMBER IN YOUR

PRAYERS

Mary Niec, Alivia Kobal, Glenn "Joe" Hess, Gary LaBuda, Jeanette Klaehn, Amelia Rebello, Larry Kuznik, Irma Zappitelli, John Sofcheck, Irene (Ernie) Santiago, Gary Skelley, Virginia Soflkanacs, Evelyn Bastian, Mary Lou Neuendorf, Joseph Bublavay, Anna Mendoza, Marianne Kucinski-Powers, Edith Lysyj, John Geiger, Rosie Colucci, Buzzy Miano, Judy Bruzshinsky, Carol Broze, Stan Wasacz, Marcia Bailey, Jim Tisch, MaryLou Durfee, Chris Grdosic, Kathy Svoboda, Matt Pauloski, Kelley, Tootie, Megan Arena, Lena Sunyak, Chuck Pacanovsky, Theresa Truxall, Susan Fenski, Antoinette Jakosh, Rose Arlia, Liz Woisnet, Betty Popow, Allen Phillips, Ruth Bublavay, John O'Malley, Jesse Kazimer, William Wollard, Claudia Wollard, Carol Rucinski, Joe Deranek, Ben Wheelock, Janice Smith, Lesley Uffman, Dorothy Pazdernik, Sandie Stefanchik, Jordan Sierra Lionberger, Dottie Barr, Joe Barr, Brett Stewart, Allison Dusenbury, Mary Ann Perry, Mary Ann Corlett, Shawn Calvey, Gloria Madonia, Sharon Rock, Anthony Bozek, Joe Brodzinski Suzanne Brown, Joyce Stevens, Victoria Fischer, John Gierlach, Dylan Greve, Ken Perry, Dayna Hansen, Leo Hansen, Betty Hinton, Eileen Johnson, Judy Towalski, Susan Mante, Vicki Przybylski, Kristi Burkhart, Maria Giangrande, Amanda Pacanavsky, Leslie Hahn Karen Horvath, Chris Geiger, Scott, Jesse Wilson and Kathy Patterson.



Sr. Grace Kupiszewski

Mercedarian Sister

of the Blessed Sacrament, Novice

Every week we pray for those discerning a vocation in religious life. Pray that they may continue to persevere and that others may respond to God's call.

Sanctuary Candle Intention

December 3rd—December 16th

+Bill LaGodney Sr.

With Love Always,
Mary, Bill & Family

MASS INTENTIONS

Monday, December 11th—St. Damasus I, Pope

8:30am Joseph Dobay 41st Birthday (Mom & Dad)

Tuesday, December 12th—Our Lady of Guadalupe

8:30am +Mary Ann Kiesel (Donald & Dianna Behlke)

Wednesday, December 13th—Saint Lucy, Virgin and Martyr

8:30am +Ronald Larson (Rita & Dave Neumann)

Friday, December 15th—Advent Weekday

8:30am +Charles & +Helen Hadady, +Donna Martins (Janet Golla)

Saturday, December 16th—Advent Weekday

4:00pm +Kevin Carlin (Family)

Sunday, December 17th — 3rd Sunday of Advent

8:00am People of the Parish

11:00am +Nancy Montali (Patty Larson)

Notes: The + before a person's name indicates that they are deceased. There is no Mass here at St. Leo's on Thursdays. You can visit another nearby parish for weekday Mass including St. Charles Borromeo (7:00a & 7:00p), Mary Queen of Peace (8:00a), St. Columbille (8:15a) or St. Francis de Sales (8:45a).

READINGS FOR THE WEEK

FIRST READING: Isaiah 40:1-5, 9-11

This Passage from the book of Isaiah begins with God calling upon the prophet to encourage the Jewish people who are exiled in Babylon. The prophet is to tell them that they will be returning home soon, and the road of return will pass through the desert. We will also hear God call the *people* to proclaim from a mountaintop the goodness of God.

SECOND READING: 2 Peter 3:8-14

The second letter of Peter was written nearly 100 years after Jesus' death and resurrection. At an earlier time, Christians had expected the Lord to return in glory quickly. But by this time, they had lost confidence that the Lord would return at all. The author doesn't want people to abandon their hope, and gives a positive interpretation to this delay.

SUNDAY Is 40:1-5, 9-11/Ps 85:9-10, 11-12, 13-14 (8)/2 Pt 3:8-14/Mk 1:1-8

MONDAY Is 35:1-10/Ps 85:9ab and 10, 11-12, 13-14/Lk 5:17-26

TUESDAY Zec 2:14-17 or Rv 11:19a; 12:1-6a, 10ab/Jdt 13:18bcde, 19/Lk 1:26-38 or Lk 1:39-47

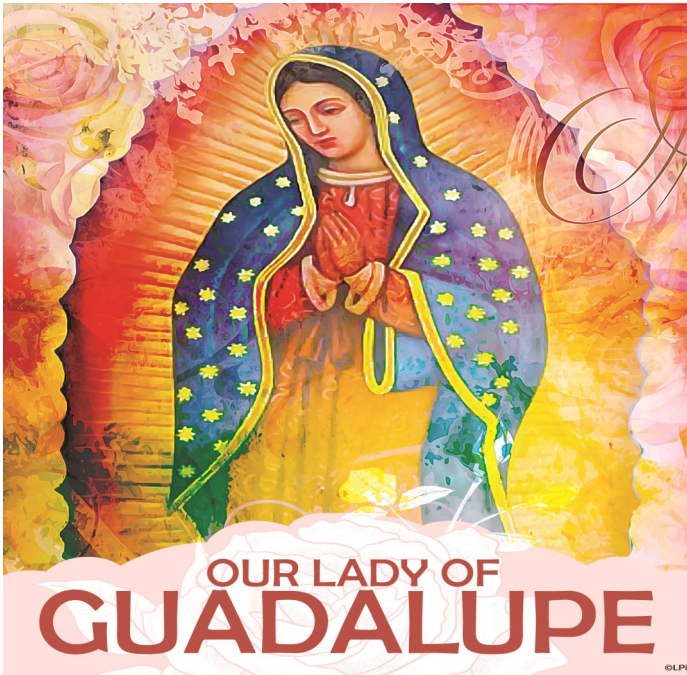
WEDNESDAY Is 40:25-31/Ps 103:1-2, 3-4, 8 and 10/Mt 11:28-30

THURSDAY Is 41:13-20/Ps 145:1 and 9, 10-11, 12-13ab/Mt 11:11-15

FRIDAY Is 48:17-19/Ps 1:1-2, 3, 4 and 6/Mt 11:16-19

SATURDAY Sir 48:1-4, 9-11/Ps 80:2ac and 3b, 15-16, 18-19/Mt 17:9a, 10-13

WELCOME! Have you moved into the area recently or joined us for Mass and would like to register with our Parish family? Please stop by the rectory office or give us a call at 216-661-1006. You can visit our website leothegreat.org for more information. We look so forward to meeting you!



Our Lady of Guadalupe When Mary appeared to Juan Diego as Our Lady of Guadalupe, she had encouraging words for him. "Am I not here, I who am your mother?" In the image on Juan Diego's tilma (tunic), Mary identifies herself with the Aztec people. She has their hair and features, their symbolic maternity dress. She incorporated their important symbols of the sun, moon, and stars. Today's Mass includes two Gospel options. Both are familiar passages from the Gospel of Luke the Annunciation and the Visitation. Both are equally relevant to today's feast because Mary's yes to Christ isn't only to care for him but to come to us. Our Lady of Guadalupe is pregnant. The image bears witness to Mary's yes to conceive the Savior of the World. But even in her pregnancy, she goes to care for Elizabeth. Now Mother to all the world, Mary comes to the aid of her children reminding them of her presence among.



REFLECTIONS | SACRED HEART COUNSELING

Mark 1:1-8 introduces the ministry of John the Baptist, heralding the coming of Jesus. In this passage, the call to "prepare the way of the Lord" resonates as a poignant metaphor for mental health. The wilderness, where John baptizes, symbolizes the internal landscapes of our minds — sometimes untamed, but also where profound transformation can occur. In the wilderness of our minds, we often grapple with the difficult terrain of doubt, anxiety, and self-discovery. John's call to repentance mirrors the mental health journey, urging us to confront and turn away from destructive thoughts and behaviors. Acknowledging our vulnerabilities and shortcomings is the first step in preparing the way for healing and growth. St. Francis de Sales once said, "Have patience with all things, but chiefly have patience with yourself." Mental health is a journey, not a destination, and cultivating patience with ourselves is crucial. The baptism of repentance in this passage speaks to the cleansing power of acknowledging our struggles. The act of preparation is an ongoing process, and it invites us to be attentive to our interior mental landscape with a sense of hope and purpose. As we reflect on this passage, let us embrace the invitation to prepare the way within ourselves with the diligence of John the Baptist, but also with the reminder of patience for ourselves from St. Francis de Sales. With their words, may we navigate our mental wilderness with patience, recognizing that each step of the journey is a significant part of the unfolding path toward healing and peace.

—Luke Brown, LCC



Holistic Catholic Counseling
www.sacredheartcleveland.com
440-305-6192



ST. LUCY'S DAY | DECEMBER 13

A name that means "light," St. Lucy (283 – 304) is the patron saint of those blind or suffering with eye trouble. Not much is known about her life, except that she was determined to remain a virgin and thus refused marriage. History tells the story of a frustrated suitor who eventually accused St. Lucy of being a Christian (at crime at the time), and she was executed in Syracuse, Sicily, in the year 304.

Today, we celebrate a number of traditions that incorporate symbolic meaning of St. Lucy as the "bearer" of light in the darkness of winter. This is particularly seen in Scandinavian countries, with their long dark winters. There, a young girl dressed in a white dress and a red sash (as the symbol of martyrdom) carries palms and wears a crown or wreath of candles on her head. In Denmark, Norway and Sweden, girls dressed as Lucy carry rolls and cookies in procession as songs are sung.

The Xavier Society for the Blind provides resources for those with visual impairments. The organization commemorates St. Lucy on her feast day every year, as she is a patron of the blind. They provide free religious, spiritual, and inspirational reading materials in braille for children and adults. Learn more at xaviersocietyfortheblind.org

FROM THE PASTOR'S DESK



Dear Parishioners,

The funeral Mass for Cheryl Duncan was celebrated on Wednesday November 29th. Like so many others, she had a devotion to the Blessed Mother & so prayed the rosary often. She had been married to her husband William for 58 years and we express our sympathy to him and to their surviving daughter, Charlene and granddaughter Kinsey. Cheryl was involved in her daughter's school activities and in our parish community. She helped at soup kitchens, made wigs for cancer patients and belonged to a prayer group at our parish. She lived the beatitudes. May she now receive her heavenly reward.

It's still hard to believe that my dad & his wife died early in this year. Mildred would have been 104 this Tuesday. May we all remember fondly and with gratitude all our loved ones who have gone before us and pray for them as we hope they pray for us.

I'd like to meet with those interested in taking another trip to Italy in March of 2025. We met a few weeks ago in the Parish Center but this time I'd like to meet briefly in the chapel area of the church next Sunday, December 17th, right after the 11am Mass. I have 2 itineraries that I'd like to share with you so that you can choose one. Then the travel company can begin to make arrangements for us. This tour is open to anyone, whether they went with us this past March or are from another parish so please spread the word & I look forward to meeting with you next week.

I invited you last weekend to take home with you one of the blue Advent booklets available on the tables in the corners of the church which has a nice short reflection for each day, so if you have not yet taken one, please do so this weekend. Also there is a purple pamphlet that has our Christmas Mass schedule on it (with one small error...January 1st is not a holy day of obligation this year as it falls on a Monday but is a civil holiday so the rectory office will be closed and there will be no 8:30am Mass that morning). Please note too that the rectory office will be closed on Tuesday, December 26th, the day after Christmas, so again, there will be no 8:30am Mass. But I especially draw your attention to our Mass obligation for December 24th & 25th. This year, the Fourth Sunday of Advent falls on the same day as Christmas Eve, with Christmas on Monday. The separate obligations to attend Mass for the Fourth Sunday of Advent and Mass for Christmas remain. The Sunday obligation may be fulfilled on Saturday evening after 4:00 p.m. or at 8am or 11am on Sunday. The Christmas obligation may be fulfilled on Sunday with the 4:00 p.m. Mass or at the 8am or 11am Mass on Monday, Christmas day. In order to fulfill both obligations, two Masses must be attended, i.e. it is not possible for attendance at one Mass after 4:00pm on Sunday to fulfill both obligations.

This Wednesday, December 13th, is the feast of St. Lucy. So I will bless the statue of St. Lucy which is now to the right of the statue of St. Francis outside the doors of the church by the chapel area. The statue of St. "Lucia of Syracuse" was purchased with money that has been donated to the church with no special request for its use. I thought it was a beautiful statue which was meaningful for our parish given the number of us whose eyesight has dimmed over the years, as St. Lucy is the patron for the blind. We don't know much about her except that she was a martyr of the 4th century who lived from 283-304 AD & was killed (martyred) during Diocletianic Persecution. Lucy's name means "light." I have seen her mummified body in a church in Venice. You can read more about her on the internet. St. Lucy, pray for us.

Fr. James Schmitz

BEREAVEMENT SHARING GROUP

Have you recently lost a loved one—a spouse, sibling, a parent, other relative or a close friend? Join the St. Leo the Great Bereavement Sharing Group. We are a group who have a common bond—the loss of someone close to us. All are welcome to come and share with us on the **first MONDAY of every month at 2:00 PM in the Parish Center**. We meet for about an hour and share our feelings and memories of our loved ones.

Feel free to join us—no reservations needed!

Upcoming Meetings:

Yet to be determined

**If you have any questions,
contact Joan Berigan at 216-661-1006 or by
email: jberigan@leothegreat.org.**

PRE-PLANNED FUNERAL

Do your loved ones know what your wishes are for your funeral Mass? Have you thought about the readings you'd like to have at your funeral Mass? If so, contact Joan Berigan at the rectory (216-661-1006) or jberigan@leothegreat.org for help in pre-planning your funeral Mass.

HOW YOU CAN CONTINUE TO SUPPORT US WITH YOUR CONTRIBUTIONS

We are grateful that so many of you have continued to contribute. Here are a few ways to help you with your contributions:

- 1) Mail your contribution envelope(s) to us, either for the week or the month. (St. Leo the Great, 4940 Broadview Rd., Cleveland, OH 44109)
- 2) Drop your contribution envelope(s) in the mail slot of the rectory office door.
- 3) Online Giving is available here at St. Leo the Great. Look for this icon on our website www.leothegreat.org to sign up. It's incredibly easy and you have many options: weekly, monthly or one-time contributions, the ability to use a checking/savings account direct withdrawal (you just need your account and routing numbers) or you can use a debit or credit card (Visa, MasterCard, American Express or Discover). It is simple and secure.

If you have any questions or need help, call the parish office at 216-661-1006 and we will gladly assist you.



Sunday, November 26, 2023

Sun. Envelope	\$	6,463.10
WeShare	\$	1,555.00
Total	\$	8,1018.10
Cap. Improv	\$	480.00
WeShare	\$	80.00
Total	\$	560.00
SVDP	\$	0.00
WeShare	\$	60.00
Total	\$	60.00

*Thank you for
you continued
generosity and
support of
St. Leo the
Great Parish !*

November Totals

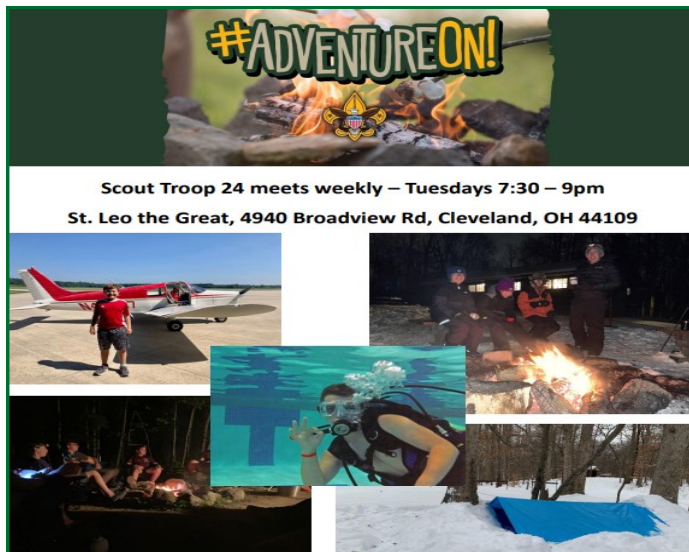
All Saints.....	\$	1,119.00
All Souls.....	\$	1,228.00
Human Development.....	\$	206.00



Hallow

Download the Hallow app by scanning the QR

Code above & be directed to the Hallow website for resources that help strengthen your daily prayer life.



Scout Troop 24 meets weekly – Tuesdays 7:30 – 9pm
St. Leo the Great, 4940 Broadview Rd, Cleveland, OH 44109

Looking for adventure?!

Come see what **Boy Scouts Troop 24** has to offer!
Leadership! Camping! Backpacking! Campfire Starting!
Ax & Hatchet! Archery! Riflery! Shotgun! Flying
Airplane! SCUBA! Kayaking!
Winter Shelter Building & Camping!

Who: 6th-12th graders

Where: St. Leo's Parish Community Center

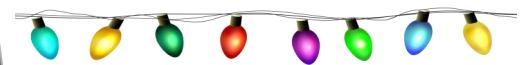
When: Tuesdays 7:30-9:00pm

Contact: Mike Robinson 216-409-3733 or Email Troop 24
at scout-troop-24@googlegroups.com



CHRISTMAS WAFER | OPLATKI

Available for \$3.00 in the Rectory Office during regular hours or after weekend Masses in the back vestibule of the church.



GET YOUR GIFT CARDS

With the Holidays almost upon us, be sure to stop by the Rectory Office to purchase gift cards for those “stocking stuffers”—a great way to check off your holidays shopping list while supporting the parish and school! Note: Newly added gifts cards include *McDonald's*, *AMC Theatre*, *Meijers*, *Home Goods* and *Sierra* (an extension of T.J. Maxx)



THE GREAT SWEEPSTAKES

Our 2023 Sweepstakes Raffle is now ended. Tickets are now available in the Rectory Office for the 2024 Sweepstakes Raffle effective January 1, 2024-November 10, 2024. Tickets will again be \$30 each and will be available just in time for the holidays. They make a great Christmas present that offers a chance to win multiple time year round.

REFLECTIONS FOR EVERYDAY STEWARDSHIP

Jubilation to Share

By: Tracy Earl Welliver, MTS

Sometimes you have something to share with people that causes you to well up inside with excitement to the point of going crazy. A pregnancy test, a pay raise, a college acceptance, a wedding or engagement are all examples of moments in life when we might be bursting at the seams to tell somebody the good news. When we finally get the chance to tell somebody, joy just seems to flow through us with ease. We literally want the entire world to share in our jubilation.

When was the last time you shared with a friend or loved one how much your faith in Jesus means to you? You don't feel the same motivation to share? Are you not overwhelmed with a desire to spread the Good News?

Don't feel bad. You are not alone. As Christians, we often fail to grasp the powerful implications of being a disciple of Jesus Christ. We can become complacent and lose sight of what matters the most. That is when sharing with others about our faith seems uncomfortable.

Faith is a gift. As everyday stewards we are called to share with others what God has given us. Advent is a great time to grow in our faith and love of the Lord. The more we cultivate our faith and the closer we draw to Him, the more we will want to share about Him. We might not have the impact of John the Baptist in the course of human history, but our proclamation of the Gospel to another might be the gift that changes their history.

Pro-Life Group Meeting

Because the Christmas holidays are so close to the normal meeting date, the Pro-Life group will NOT be meeting in December.

Wednesday January 17, 2024 at 1:00 pm
in the Parish Center. The topic for this month's discussion is yet to be determined.

ALL ARE WELCOME TO JOIN US!

Because our country remains under constant attack from evil, we ask all to continue praying to St. Michael the Archangel, as often as you can. He can help us defeat the enemy.

If you have any questions about the group, the meeting or its content, please contact either Dennis Badar at 216-398-2830, Chris Rath at 216-394-5803 or Nina at ncapone@leothegreat.org

Prayer to St. Michael the Archangel
St. Michael the Archangel, defend us in battle. Be our protection against the wickedness and snares of the devil. May God rebuke them, we humbly pray, and cast into Hell Satan and all the evil spirits who prowl about the world seeking the ruin of souls. Amen.

A SNEAK PEEK AT THE 2024 BUS TRIPS

The Sanctuary Museum | Lakewood, Ohio
(formerly the Museum of the Divine Statues)
Wednesday, March 6, 2024

River's Casino | Pittsburgh, PA
Wednesday, April 17, 2024

More details will be posted at a later date.



*For reservations or questions contact
Sandy Diaddario at 216-926-3123*

LIVING IN FAITH TOGETHER

Ladies, all ages, no matter where you are in your faith journey, please, join us next month on **Tuesday, January 16, 2023 at 6:30p.m. in the Parish Center**. We are meeting to connect and *LIFT* each other up as we grow our relationship with God and learn to live more intentionally and prayerfully in our Journeys as women of the faith. For more information contact Pat (216-403-1523) or Barb (216-302-5454) or email Nina at the rectory office at ncapone@leothegreat.org.

Mothers, Grandmothers, Aunts, etc. of students at St. Leo School, please consider joining us one evening and witness the powerful, prayerful support of friends in faith.

PARISH INFORMATION

RECTORY STAFF **216.661.1006**

Father James Schmitz, Pastor

jschmitz@leothegreat.org

Deacon Patrick & Joan Berigan

pberigan@leothegreat.org

jberigan@leothegreat.org

Brenda Basalla, Business Manager

bbasalla@leothegreat.org

Nina Capone, Office & Media Manager

ncapone@leothegreat.org

Mary Piechowski, Associate Musician

mpiechowski@leothegreat.org

Miss Nadia, Parish Center Coordinator

missnadia@leothegreat.org

Judy Strodbeck, Facilities Manager

jstrodbeck@leothegreat.org

SCHOOL STAFF **216.661.2120**

Denise Burns, Principal

dburns@leothegreat.org

Robin Salem, Assistant Principal

rsalem@leothegreat.org

Eileen Breitmeyer, School Secretary

ebreitmeyer@leothegreat.org

Joann Deranek, DRE

jderanek@leothegreat.org

Dan Trainer, Athletic Director

dtrainer@leothegreat.org

RECTORY/OFFICE HOURS:

Mon-Fri | 9:00am—4:00pm

Saturday | 12:00pm—5:00pm

Sunday | 9:00am—12:00pm

WEEKEND MASS TIMES

Saturday Vigil: 4:00pm

Sunday 8:00am & 11:00am

WEEKDAY MASS TIMES

Mon, Tues, Weds & Fri @ 8:30am

RECONCILIATION

Saturday 3:00pm-3:30pm

Sunday 10:00am-10:30am

New parishioners and those moving from the parish or changing addresses are asked to contact the Rectory Office or utilize our website to update your records.

www.leothegreat.org



leothegreat.org/flocknote



Instagram @leothegreatorg



Twitter @leothegreatorg

SCHOOL HOURS:

Monday-Friday

8:00a.m.-3:00p.m.