



ST. LEO THE GREAT PARISH & SCHOOL

WORLD MISSION SUNDAY

October 22, 2017

Father James P. Schmitz

Pastor

Father James J. Vesely

In Residence

4940 Broadview Road

Cleveland, Ohio 44109



PARISH STAFF:

216.661.1006

Father James Schmitz, Pastor

jschmitz@leothegreat.org

Mary Lou Hauck, Office Manager

mlhauck@leothegreat.org

Brenda Basalla, Business Manager

bbasalla@leothegreat.org

Mickey Stitt, Music Director

mstitt@leothegreat.org

Julie Slattery, Associate Musician

jslattery@leothegreat.org

Macrina Dodson, Pastoral Minister

mdodson@leothegreat.org

RECTORY/OFFICE HOURS:

Monday through Friday ~ 9:00AM—7:00PM

Saturday ~ Noon—5:30PM

Sunday ~ 9:00AM—12:30PM

SCHOOL STAFF:

216.661.2120

Denise Burns Principal

dburns@leothegreat.org

Eileen Breitmeyer, School Secretary

ebreitmeyer@leothegreat.org

Jennifer Robinson, Preschool Director

jrobinson@leothegreat.org

Mary Perry, Director of Religious Education (DRE)

mperry@leothegreat.org

Cindy Funari, Tuition Manager

cfunari@leothegreat.org

SCHOOL HOURS:

Monday through Friday/School Day ~ 8:00AM—2:45PM

Main Office ~ 7:30AM—3:30PM

MASS SCHEDULE

WEEKENDS

Saturday Vigil ~ 4:00PM

Sundays ~ 8:00AM, and 11:00AM

WEEKDAYS

Monday through Thursday ~ 7:30AM

Friday ~ 8:30AM

HOLY DAYS OF OBLIGATION

8:30AM and 7:00PM

SACRAMENT OF RECONCILIATION

Individual confessions are heard on Saturday, from 2:45PM—3:30PM or anytime by appointment.

NEW TO THE PARISH? WELCOME!

New parishioners and those moving from the parish or changing address are asked to contact the Rectory office.

BAPTISMS

Parents desiring Baptism for their children are asked to contact the Parish Office to make arrangements.

SACRAMENT OF MARRIAGE

Preparations and arrangements must be made at least 6 months in advance with a priest. Only then can a wedding date be confirmed.

INTERESTED IN BECOMING CATHOLIC?

If you are curious about becoming Catholic or have questions about the Catholic Faith, please call the Rectory.

DOWNLOAD OUR MOBILE APP!

Read the latest bulletin, Pastor's blog and find other useful information on your mobile device.

Instagram @leothegreatorg



Facebook—leothegreatorg



Twitter @leothegreatorg



OCTOBER 22, 2017—WORLD MISSION SUNDAY

PLEASE REMEMBER...Sarah Geier, Edward P. Gorczyca, Betty Jayne Glover, Bob McLaughlin, Stella Sugalski, Mary Jane Funta, Theresa Pauloski, Annamae Sironen, Ann Sazpansky, Larry Kuznik, Jo Hoffman, Anna Mendoza, John Risko, Glenn "Joe" Hess, Diane Soler, Muffie Bone, Theresa Truxall, Gary LaBuda, Jeanette Klaehn, Ruth Frohlich, Ron Vokac, Charles Hakain, Walter Milewski, Harriet Watson, Megan Sunyak, Kathy Koval, Dianne Holland, Harold Esterwood, Lisamarie Rivera, August Bublavy, Barbara Ann and Family, Larry Augustine, Jeanne Gascoigne, Michael Graham, Miriam Fontaine, Grace Pauloski, Ann & Family, Irene Smith, and Paul Provenziale.



October 23rd to October 29th

Monday, October 23rd: St. John of Capistrano

7:30 a.m. +Benjamin Hochman (Family)

Tuesday, October 24th: St. Anthony Mary Claret

7:30a.m. Tommy Piascik (Krakora Family)

Wednesday, October 25th: Weekday

7:30a.m. St. Jude—In Thanksgiving

Thursday, October 26th: Weekday

7:30a.m. To be announced

Friday, October 27th: Weekday (All School Mass)

8:30a.m. +Decenzio & Maria Neroni (Family)

Saturday, October 28th: SS Simon & Jude

4:00p.m. +Lyndsey Madej (Madej Family)

Sunday, October 29th: 30th Sunday in Ordinary Time

8:00a.m. People of the Parish

11:00a.m. +Anne Ambrose (SVDP Outreach)

GREAT SWEEPSTAKES WINNER

Pamela & Jeffrey Mangione

October 16, 2107

CONGRATULATIONS!



Forms to sign up for our **NEW Great Sweepstakes** will be available this Sunday, October 22nd. The new drawing will start on Monday, November 13th. Forms to sign up are available at the Information Desk in the vestibule of the Church or at the rectory office. Don't miss your chance to win in this weekly drawing!

2018 MASS INTENTION BOOK



The 2018 Mass Intention Book is now open. Each parishioner household may have 4 Mass Intentions (one weekend and three weekdays). The Mass stipend is \$10.00.

Every week we pray for those discerning a vocation in religious life.

Robert Purgert, n.S.J.
Society of Juses
1st Year Novitiate



Pray that he may continue to persevere and that others may respond to God's call.



PARISH SUPPORT

Sunday, October 15, 2017

Basket Collection.....\$ 6,551.50
WeShare (online) 765.00
Total\$ 7,316.50

Thank you for your continued support

First Reading: Isaiah 45:1, 4-6

When today's passage from the book of Isaiah was written, the Jewish people had been held in exile by Babylon for more than 40 years. Cyrus, the kind of neighboring Persia, was preparing to invade Babylon. The prophet sees Cyrus, a pagan king, as an instrument of God. Through this military victory, God will free his people and allow them to return home.

Second Reading: Thessalonians 1:1-5

Paul's first letter to the Thessalonians is the earliest of all New Testament writings, coming only about 20 years after the Resurrection of Jesus. Today's reading gives us the letter's opening words. In just five verses, we hear reference to God the Father, the Lord Jesus and the Holy Spirit, and also to faith, hope and love. It indicates how quickly these essentials of our faith became part of our Christian tradition.

Readings for the Week of October 23, 2017

Monday: Rom 4:20-25/Lk 1:69-75/Lk 12:13-21

Tuesday: Rom 5:12, 15b, 17-19, 20b-21/Ps 40:7-10, 17/Lk 12:35-38

Wednesday: Rom 6:12-18/Ps 124:1b-8/Lk 12:39-48

Thursday: Rom 6:19-23/Ps 1:1-4, 6/Lk 12:49-53

Friday: Rom 7:18-25a/Ps 119:66,68,76-77,93-94/Lk 12:54-59

Saturday: Eph 2:19-22/Ps 19:2-5/Lk 6:12-16

Next Sunday: Ex 22:20-26/Ps 18:2-4, 47, 51/1 Thes 1:5c-10/Mt 22:34-40



SANCTUARY CANDLE INTENTION

October 15th to October 28th

In Loving Memory of Martin Fontaine
From Miriam Fontaine



ST. LEO THE GREAT
PARISH & SCHOOL

October 1, 2017

Dear Parishioners of St. Leo the Great,

Every year the Finance Council of the Parish reviews the Financial Report from the previous fiscal year as well as the budget for the upcoming fiscal year as prepared by the Business Manager and the Pastor. We also share this information with you which can be found on the reverse side of this letter.

For the fiscal year of 2016-17 which ended this past June 30th, we were able to have a balance of \$29,000 in the black. Again, this is in spite of the many repairs and improvements that we were able to make on our property, inside and out. I continue to be very grateful to our Business Manager, Brenda Basalla, to our maintenance department and to you for your continued financial commitment to the parish. It is typical for a parish to lose between 2-5% of their contributions each year but we lost only one half of a percent, despite the number of people who sadly died or moved away from the area. We are also grateful to our new parishioners who also help to support us as we provide services to them now that they too are members of the community.

As you know from my columns in the parish bulletin this summer, we have a number of expensive repairs and improvements that still need our attention, most especially work on the heating system in the church and school buildings. These are the things that require our diligence as we prepare a budget for this current fiscal year of 2017-18. The major repairs we will be working on include patching the very large hole in the ceiling of the sanctuary (altar) area as well as several smaller holes in the ceilings of the vestibule and back of the church, masonry work on the church arches which are dangerously cracked, and replacing the long sidewalk leading up to the front school doors which had very large & deep cracks. Our improvements include repairing the worst parts of the parking lot (this was done this summer) and work on the parking lot will need to be done every summer. We also replaced several windows in the school building which were cracked, broken or replaced with plastic in the past which greatly reduces efficiency. Finally we have replaced the carpet in the Parish Community Center (first floor) with tile that can handle the traffic from many parish and school meetings as well as the rental of that space (for baptism, graduation, & baby shower parties, funeral luncheons, etc.). Finally, our repairs of the heating system in the church and school costs at least \$200,000 which is 2/3rd's of our total capital improvements during this year.

Our balance at the end of this fiscal year is projected to be \$1,150,000.00 which is very healthy despite these major expenses. We trust that completion of these major repairs & improvements will allow us to save substantially in the coming years. Please feel free to ask me or a finance council member any questions you may have. And thanks always for your financial support.

Dr. Jim Schmitz

SUMMARY FINANCIAL REPORT
ST. LEO THE GREAT, CLEVELAND
FOR THE FISCAL YEARS ENDING JUNE 30, 2016 and JUNE 30, 2017

			Budget		
			2015/2016	2016/2017	2017/2018
Parish Receipts:					
Offerory Collections	468,311	466,698	460,000		
Other Collections	21,712	23,277	21,100		
Donations & Bequests	36,453	13,196	0		
Net Fund Raising Income	31,070	51,095	26,300		
Income from Parish Programs	25,144	24,107	19,000		
Investment & Endowment Income	1,626	9,487	0		
Miscellaneous Receipts (includes RIF)	17,273	10,579	4,000		
Designated Collections	15,119	18,789	12,425		
Other Extraordinary Receipts	0	0	0		
Total Parish Receipts	\$616,707	\$617,227	\$542,825		
Parish Disbursements:					
Salaries, Benefits, & Taxes	274,107	296,868	301,300		
Rectory & Household	33,561	32,158	31,500		
Parish Office & Administration	59,978	58,407	60,050		
Altar, Sanctuary, & Liturgical	24,655	27,966	30,595		
Community Outreach	17,267	20,527	16,250		
Religious Education & Evangelization	5,462	3,178	3,800		
Stewardship & Evangelization	795	1,616	2,000		
Utilities	35,919	39,236	40,400		
Insurance & Property Taxes	20,220	20,629	22,000		
Maintenance, Repairs, & Plant Operating	44,069	48,474	50,700		
Diocesan Assessments	55,404	54,444	55,000		
Designated Collections	15,653	18,789	12,425		
Capital Disbursements	27,365	48,906	184,500		
Extraordinary Expenses			2,000		
Total Parish Disbursements	\$614,455	\$671,196	\$812,520		
TOTAL PARISH SURPLUS (DEFICIT)	\$2,253	(\$53,970)	(\$269,695)		
School Receipts					
Tuition & Fees	877,089	1,023,304	1,076,750		
Government Assistance (incl. Mandated Services)	87,318	90,592	96,000		
Donations & Bequests	0	300	0		
Net Fund Raising	13,516	-6,762	0		
Net Pre-School & Latchkey	(438)	4,352	0		
Other Student Receipts	(1,233)	291	4,000		
Other School Income	552	706	700		
Total School Receipts	\$976,804	\$1,112,783	\$1,177,450		
School Disbursements					
Salaries, Benefits & Taxes	741,642	727,596	746,300		
Instructional	9,474	15,325	14,700		
Library	6,394	5,759	8,000		
Utilities	51,796	60,468	60,800		
Maintenance, Repairs & Plant Operating	42,358	63,808	75,100		
Insurance & Property Taxes	19,860	17,847	21,000		
Student Services	2,075	20,548	20,400		
Administration	54,438	97,174	66,200		
Capital Improvements	12,500	21,486	101,500		
Other Extraordinary Disbursements	0	0	0		
Total School Disbursements	\$940,537	\$1,030,010	\$1,114,000		
TOTAL SCHOOL SURPLUS (DEFICIT)	\$36,267	\$82,773	\$63,450		
Parish and School Assets, Liabilities and Fund Principal					
June 30, 2015 and 2016					
			2016	2017	
Checking Accounts - Parish & School	563,778	574,334			
Savings & Investments - Parish & School	758,719	771,266			
Accounts Receivable	3,756	3,756			
Total Assets	\$1,326,253	\$1,349,356			
Accounts Payable & Other Liabilities					
Diocesan Accounts Payable	69,957	64,256			
Diocesan Benefits/ Insurance Payable	0	0			
Loans, Notes, & Mortgages Payable	0	0			
Total Liabilities	69,957	64,256			
Fund Principal	1,256,296	1,285,100			
Total Liabilities and Fund Principal	\$1,326,253	\$1,349,356			

Members of the Parish Finance Council:

Cheryl Nodge, Vicki Plata, Richard Riccardi, Kathy Schulz, Jackie Vance

FROM THE
PASTOR'S DESK



Dear Parishioners,

Included in this bulletin is a Financial Summary Sheet which every parish in the Diocese is required to make available to the parishioners each year. There is also a letter from myself which gives you an overview of our financial situation from this past fiscal year (July 1, 2016 through June 30, 2017). We were able to operate under budget while taking care of the many repairs and improvements that are required on our property and in our buildings. I acknowledge in the letter your continued faithfulness to our common financial responsibility for the upkeep of the parish and for the many services we provide to you and to others throughout the year. It always seems that because we have made so many repairs and improvements, a time will soon come when we can go through a year without the need to budget so much for future repairs. But as you know from the management of your homes and cars, that time never seems to come as there are always things that need our attention and financial commitment. The letter that accompanies the Financial Summary Sheet outlines some of the more major repairs that have been completed, are in progress, or scheduled for the future. Of course our biggest repair is to our church and school HVAC systems so next year at this time we will show a loss of about \$200,000 which has been set aside for that major work. In examining the arches of the church which have cracked over the years due to moisture, it was necessary to look at the roof of the church where we discovered large areas of water which are causing damage to the arches and to the roof itself. We are currently waiting for estimates on what will likely be another large expense. It is unknown at this time if the roof can be repaired or if it will be necessary to replace it. Despite the discouraging news of these expensive repairs, I am grateful that we have the necessary funds to take care of these important needs and I'm hopeful that we will be able to recoup our savings. Please feel free to see me or any of the Finance Council members (whose names are published on the financial report in this bulletin) if you have any questions pertaining to our financial status.

Every month I see a bus parked in our Rectory Office parking lot ready to transport many people to some interesting place or event. These bus trips are published in our bulletin & are open to anyone. They go to casino's, Amish country & so many other interesting & enjoyable places. I'm always hoping to join them myself but my schedule doesn't always permit me to go. I just wanted to let you know that there is no age requirement so if you're free to take a day trip, be sure to inquire through these bulletin announcements.

Fr. Jim Schmitz

THIS WEEK AT ST. LEO'S
October 23rd to October 29th



Monday, October 23rd

NO SCHOOL

Tuesday, October 24th

1:00 p.m. Lecture Series	Great
4:00 p.m. Grade School Volleyball Practice	Lux
6:30 p.m. SVDP	Conference

Wednesday, October 25th

9:30 a.m. Parish Catechetical Course	Basement
11:00 a.m. St. Leo's Seniors	Great
4:00 p.m. Grade School Volleyball Practice	Lux
7:00 p.m. Choir Practice	Church

Thursday, October 26th

1:00 p.m. Women's Knitting	Great
4:00 p.m. Grade School Volleyball Practice	Lux
7:00 p.m. Knights of Columbus	Great

Friday, October 27th

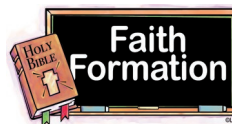
6:00 p.m. Trunk-or-Treat	School
7:30 p.m. Recovery International	Conference

Saturday, October 28th

10:00 a.m. Bitty Basketball Camp	Lux
2:45 p.m. Confessions	Church
3:00 p.m. Grapevine	Great
5:00 p.m. Fall Sports Banquet	Lux

Sunday, October 29th

5:00 p.m. Boys Open Gym	Lux
7:00 p.m. Coach Robinson Adult Open Gym	Lux



Please join us for our Faith Formation Class **THIS Sunday, October 22nd at 9:00 a.m.** in the Parish Center.



WEDDING BANNES

I Katharine Toman & Dale Gobel

**THE SOCIETY FOR THE PROPAGATION
OF FAITH—WORLD MISSION SUNDAY 2017**

WORLD MISSION SUNDAY 2017
CHAT with



TODAY IS WORLD MISSION SUNDAY—a day that

leads us to the heart of our Christian faith—leads us to mission! Your generosity on World Mission Sunday supports the work of priest, religious and lay leaders in the Missions who share our faith

with those most in need. This year we can even "chat" with our chief missionary, Pope Francis, and learn more about his missions and missionaries. Learn more at ChatWithThePope.org **Chat -Pray-Give** this World Mission Sunday.



THANK YOU TO OUR FESTIVAL SPONSORS!

FESTIVAL SPONSORS

Tomon & Sons Funeral Homes
Yurch Funeral Home
St. Columbille Federal Credit Union
Brooklyn-Parma Knights of Columbus
Leo Hansen
b.a. Sweetie Candy Company
Jack Frost Donuts
Regal Realty Inc.
Dina's Pizza
Friends of Kevin Kelley
Golubski Funeral Home
Ripepi Funeral Home
Brooklyn Giant Eagle
Pearl Brookpark Car Wash
Gabe's Restaurant
Gillombardo's Giant Eagle
Sausage Shoppe
Presswork Graphics

SPECIAL TRAVEL PRESENTATION



For anyone interested in the **Reflections of Italy Tour** that Fr. Jim will be leading on October 15-24, 2018 there will be a special travel presentation this **Tuesday, October 24th at 6:00 p.m.** The presentation will be held in the Rectory Office. Come and learn more about this once in a lifetime trip! Please call 216-661-1006 to RSVP.

ST. VINCENT DE PAUL

"I was hungry and you fed me." **THANK YOU** for your generous donations of food. Without you, the St. Vincent de Paul Outreach Organization simply could not exist here at St. Leo's. Your help makes it possible for us to help others. Thank you so very much.

THANKSGIVING DISTRIBUTION...



This year the St. Vincent de Paul Outreach Organization will be giving to our Clients a gift card to purchase their Thanksgiving turkey. In addition to the gift card we will be purchasing some additional items to help make their Thanksgiving dinner more complete. If you are able, please consider a donation to help with these expenses. Place your cash or check in an envelope marked "SVPD Thanksgiving" and drop it in the collection basket or take it to the rectory. We thank you very much for helping.

LECTURE SERIES



Albert Einstein said that when we stop learning we die. Many Catholics perhaps feel they haven't been learning much about the Church and its teachings. St. Leo the Great Parish is offering a series of lectures by Lavinia Theodoli Spirito, a dynamic speaker who has a Master's degree in theology from the Augustine Institute in Denver, CO. Her talks are on CD's which are distributed by Catholic Way Bible Study (www.cwbs.org).

The series continues in the Parish Center from 1:00 until 3:00 pm. The topic is as follows:

October 24 — "Purgatory"

The talks are NOT dependent on each other. You can choose to attend any one of them, or all of them. All are welcome! If you have any questions or for more information, please call Chris Rath at 216-741-1536.

8th Grade Retreat at Camp Christopher



ST. LEO'S SENIORS MEETING

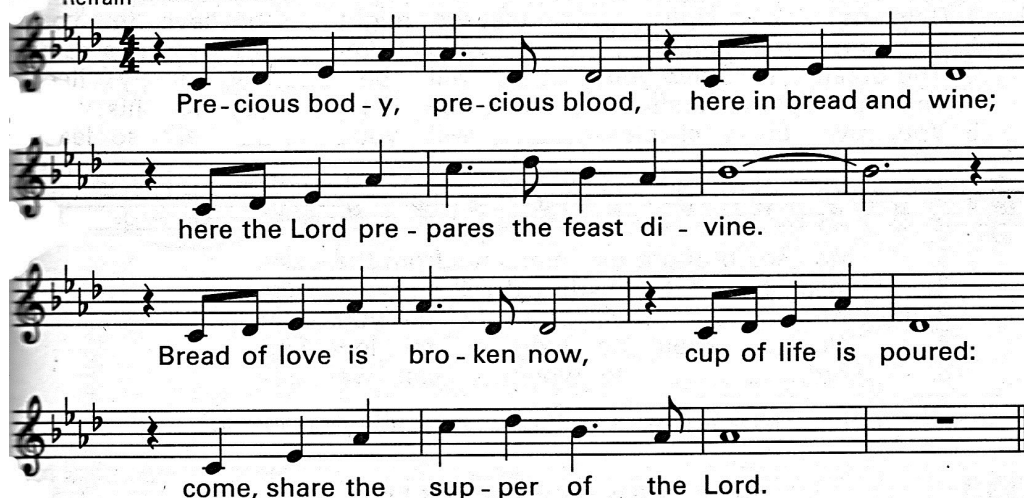
This Wednesday, October 25th, St. Leo's Seniors will meet in the Parish Community Center at 11:00 a.m. It will be a social meeting and we will be celebrating Halloween! Come and join us for pizza and a good time. Costumes optional. (no masks please)



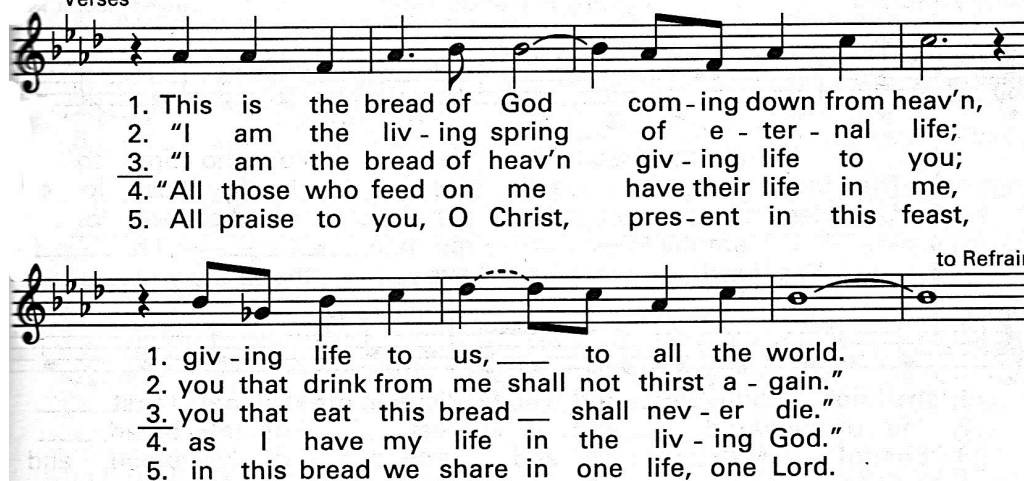
THE SUPPER OF THE LORD

Laurence Rosania

Refrain



Verses



Verses 1-4 based on John 4, 6. Text and music © 1994, Laurence Rosania. Published by OCP. All rights reserved.

BUS TRIPS

CASINO TRIP... Friday, November 3rd—Presque Isle Downs & Casino, Erie PA (Casino bonus \$25 slot play)
Cost: \$32.00—Report 8:30am
Depart 9:00am
Return 5:00pm

MEDINA TRIP...Friday, December 8th Cost: \$75.00
JM Smucker Store & Café (Muffin & Coffee incl.),
Root Candle (Shop/browse on own), *Corkscrew Salon* (Lunch included), *Castle Noel* (Included), Free time explore Medina Square—Dinner (on own), *Medina Fairgrounds* Christmas Lights,
Report 8:30am
Depart 9:00am
Return 8:15pm

Contact Joanne Todd at
440-526-3505
for more information or to
book your trip.

ALL ARE WELCOME!



Next Sunday, October 29th, is **PRIESTHOOD SUNDAY**. This day is set aside to acknowledge the spiritual role of the priests in our lives—whether through the celebration of the Mass, the celebration of the sacraments, or their presence at a time in need. Please take a moment to thank the priests who have been a part of your life and let them know what a difference they have made. Keep them in your prayers so that they will have the strength and ability to carry on God's work.

CLUSTER CORNER

MARY QUEEN OF PEACE—7th Annual Mary Queen of Peace CHRISTmas Craft Fair will be held on Sunday, November 5th from 9:30am to 2:30pm. If you are a crafter or vendor and would like to be a part of this day, please call the Parish Office 216-749-2323. A six-foot table rental is \$30.

ST. CHARLES BORROMEO—The St. Charles Ladies Guild presents a Fall Fashion Show on Sunday, October 29th from 1:30-4:30pm in Corrigan Gym. Fashions by Dress Barn and Catering by Reinecker's. Cost is \$18. Tickets can be purchased at the parish office or by calling Toni Brachna at 216-661-3457 or Karen Glahn at 216-386-3324.

ST. THOMAS MORE—**Oktoberfest Music Bingo Party!** Tuesday, **October 24th** tickets \$10 Utopia Hall Doors open at 11am, Lunch at Noon, 1:30 Music Bingo, 2:30 Drawings. Menu: Kielbasa, Cabbage & Noodles, Applesauce, Roll and Butter, Cake and Coffee.